

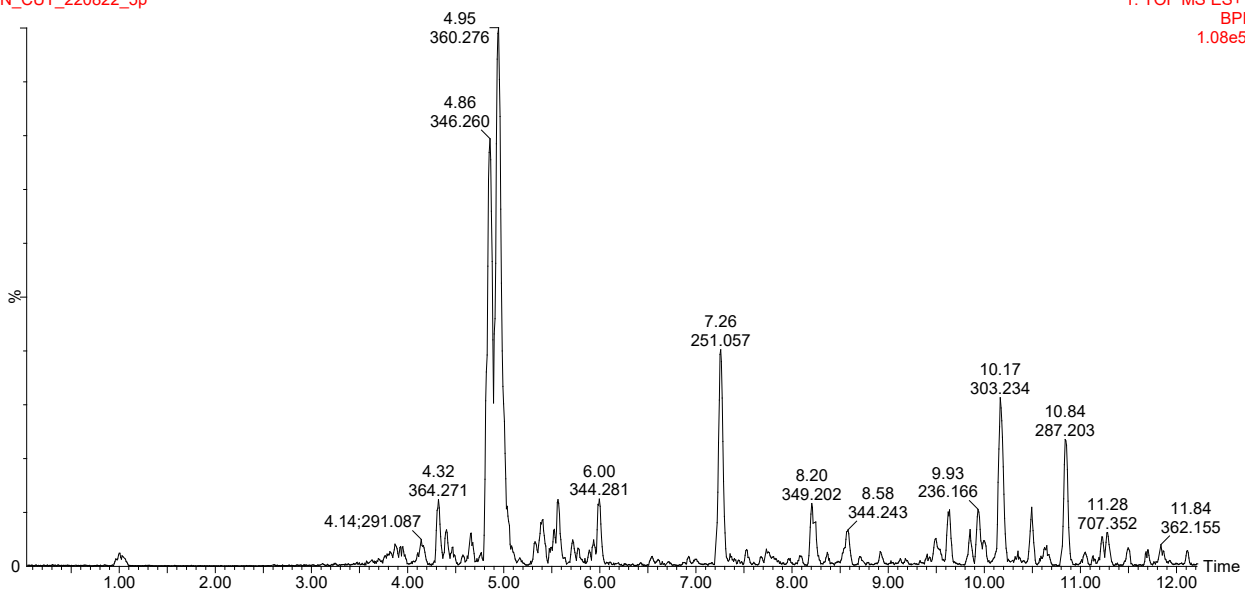
## Online Appendix 1

Note: This is Online Appendix 1 of Ngobeni, B., Manduna, I.T., Malebo, N.J. & Mashele, S.S., 2024, 'Potential therapeutic effects of *Hermannia depressa* N.E.Br. root extracts', *Journal of Medicinal Plants for Economic Development* 8(1), a239. <https://doi.org/10.4102/jomped.v8i1.239>

### SUPPLEMENTARY DATA

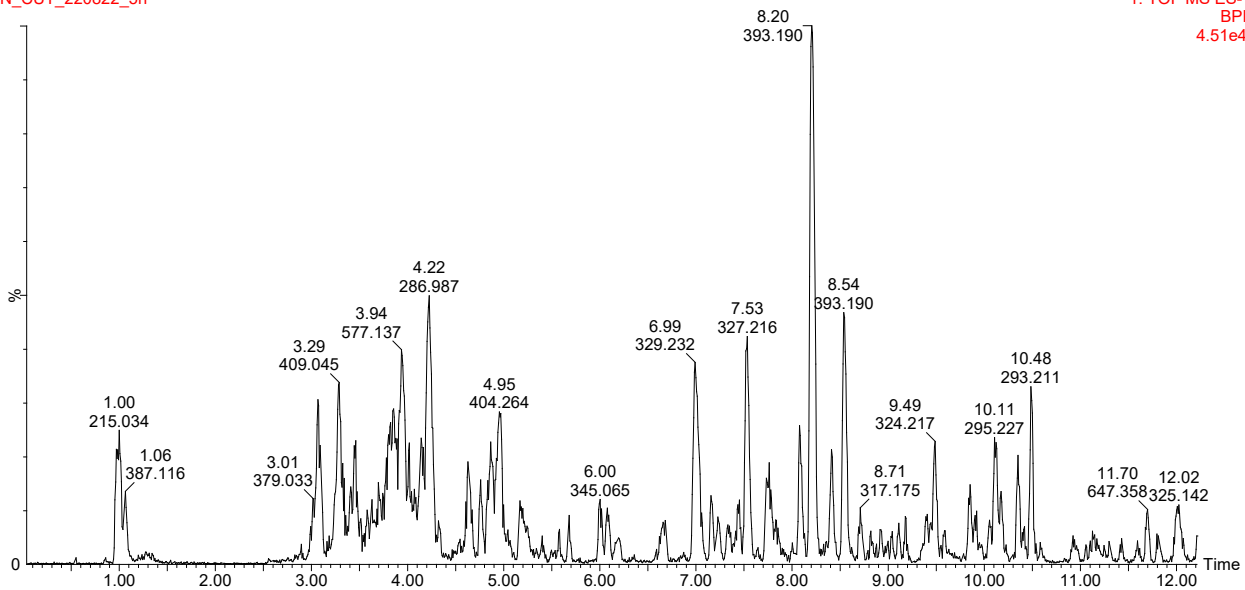
#### LCMS Chromatograms of *Hermannia depressa* plant extracts

BN\_CUT\_220822\_5p

1: TOF MS ES+  
BPI  
1.08e5

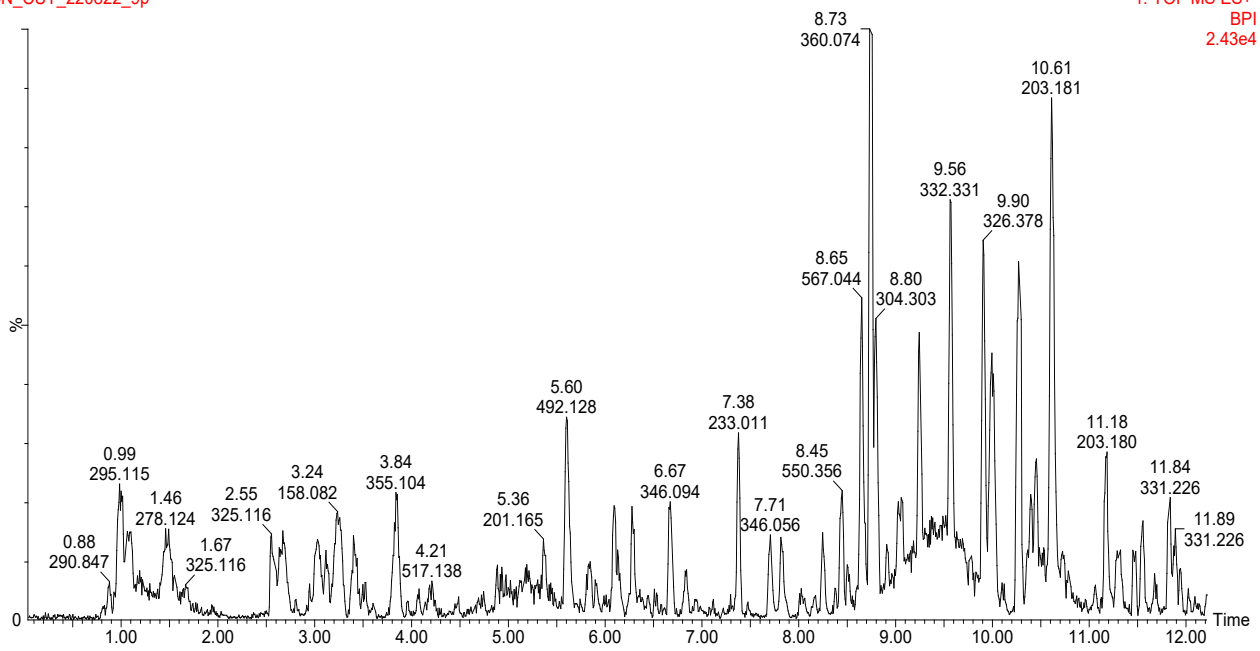
LCMS chromatogram of *H. depressa* acetone extracts in positive mode.

BN\_CUT\_220822\_5n

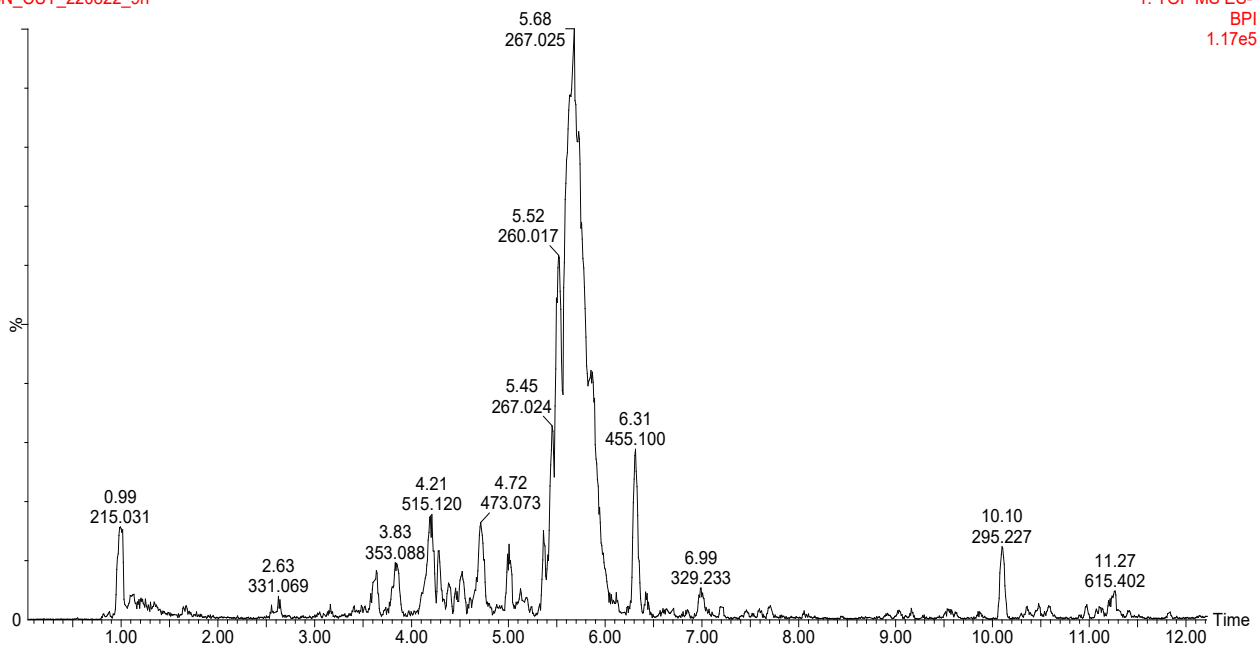
1: TOF MS ES-  
BPI  
4.51e4

LCMS chromatogram of *H. depressa* acetone extracts in negative mode.

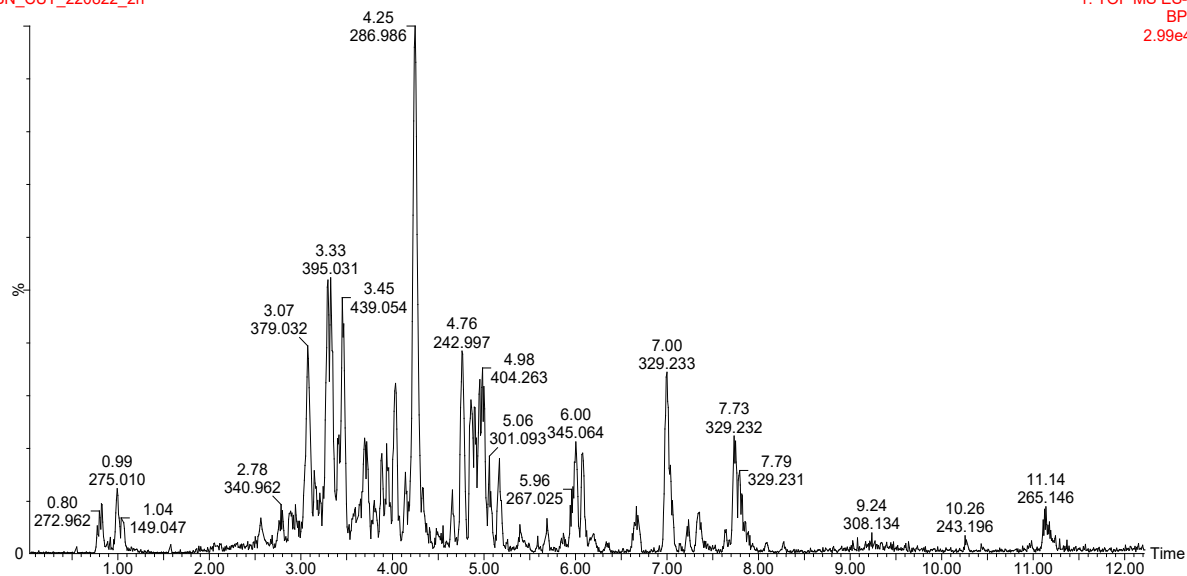
BN\_CUT\_220822\_9p

1: TOF MS ES+  
BPI  
2.43e4LCMS chromatogram of *H. depressa* methanol extracts in positive mode.

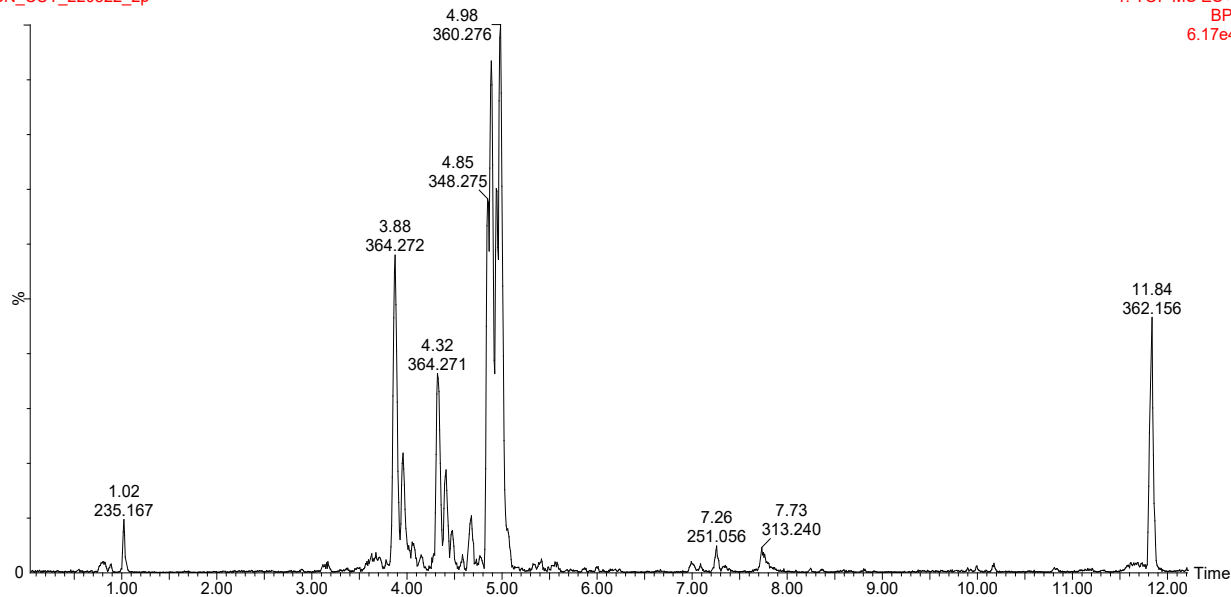
BN\_CUT\_220822\_9n

1: TOF MS ES-  
BPI  
1.17e5LCMS chromatogram of *H. depressa* methanol extracts in negative mode.

BN\_CUT\_220822\_2n

1: TOF MS ES-  
BPI  
2.99e4LCMS chromatogram of *H. depressa* aqueous extracts in negative mode.

BN\_CUT\_220822\_2p

1: TOF MS ES+  
BPI  
6.17e4LCMS chromatogram of *H. depressa* aqueous extracts in positive mode.

DPPH results according to Turkey's-Kramer test ( $HSD_{0.05} = 6.43$ )

	name	HDA0	HDA 50	HDA100	HDA 200	HDM0	HDM 50	HDM100	HDM200	HDW0	HDW50	HDW100	HDW200	Trolox0	Tro 50	Tro 100	Tro 200	
name	mean	0	62,55869	61,26761	59,97653	6,96E-15	57,01531	56,12245	54,08163	0	60,29963	59,42572	55,80524	1,26E-14	64,48276	63,10345	63,33333	
HDA0		0	-															
HDA 50		62,55869	62,56*															
HDA100		61,26761	61,27*	1,2911														
HDA 200		59,97653	59,98*	2,5822	1,2911													
HDM0		6,96E-15	0,0000000	62,56*	61,27*	59,98*												
HDM 50		57,01531	57,02*	5,543	4,252	2,9612	57,02*	-										
HDM100		56,12245	56,12*	6,436*	5,145	3,854	56,12*	0,8929	-									
HDM200		54,08163	54,08*	8,477*	7,186*	5,895	54,08*	2,9337	2,0408	-								
HDW0		0	#NUM!	62,56*	61,27*	59,98*	0,0000000	57,02*	56,12*	54,08*	-							
HDW50		60,29963	60,3*	2,2591	0,968	0,3231	60,3*	3,284	4,177	6,218	60,3*	-						
HDW100		59,42572	59,43*	3,133	1,8419	0,5508	59,43*	2,4104	3,303	5,344	59,43*	0,8739	-					
HDW200		55,80524	55,81*	6,753*	5,462	4,171	55,81*	1,2101	0,3172	1,7236	55,81*	4,494	3,62	-				
Tro 50		1,26E-14	0,0000000	62,56*	61,27*	59,98*	0,0000000	57,02*	56,12*	54,08*	0,0000000	60,3*	59,43*	55,81*	-			
Tro 100		64,48276	64,48*	1,9241	3,215	4,506	64,48*	7,467*	8,36*	10,401*	64,48*	4,183	5,057	8,678*	64,48*	-		
Tro 200		63,10345	63,1*	0,5448	1,8358	3,1269	63,1*	6,088	6,981*	9,022*	63,1*	2,8038	3,678	7,298*	63,1*	1,3793	-	
		63,33333	63,33*	0,7746	2,0657	3,357	63,33*	6,318	7,211*	9,252*	63,33*	3,0337	3,908	7,528*	63,33*	1,1494	0,22989	-

\*Indicates a significant result.

HDA0= *Hermannia depressa* acetone extract (0 µg/ml)HDM= *H. depressa* methanol extractHDW= *H. depressa* aqueous extract

Tro= Trolox

Anti-inflammatory results according to Turkey-kramer test ( $HSD_{0.05} = 11,20$ )

	name	HDA50	HDA100	HAD 200	HDM50	HDM100	HDM 200	HDW 50	HDW100	HDW200	PC
name	mean	56,34333	61,54333	77,46333	50,98667	59,43333	62,63333	48,15333	45,82	46,42333	71,48
HDA50		56,34333	-								
HDA100		61,54333	5,2								
HAD 200		77,46333	21,12*	15,92*							
HDM50		50,98667	5,357	10,557	26,477*						
HDM100		59,43333	3,09	2,11	18,03*	8,447					
HDM 200		62,63333	6,29	1,09	14,83*	11,647*	3,2				
HDW 50		48,15333	8,19	13,39*	29,31*	2,8333	11,28*	14,48*			
HDW100		45,82	10,523	15,723*	31,64*	5,167	13,613*	16,813*	2,3333		
HDW200		46,42333	9,92	15,12*	31,04*	4,563	13,01*	16,21*	1,73	0,6033	
PC		71,48	15,137*	9,937	5,983	20,493*	12,047*	8,847	23,327*	25,66*	25,057*

\*Indicates a significant result.

HDA0= *Hermannia depressa* acetone extract (0 µg/ml)HDM= *H. depressa* methanol extractHDW= *H. depressa* aqueous extract

PC= Positive control

Cytotoxicity or cell viability results according to Turkey-kramer test ( $HSD_{0.05}=104,38$ )

	name	HM100	HM200	HM400	HA100	HA200	HA400	HDW100	HDW200	HDW400	PC
name	mean	1663,445	1134,695	582,0275	1308,943	736,8875	439,9425	1726,333	1630,25	1470,778	178,9175
<b>HM100</b>	1663,445	-									
<b>HM200</b>	1134,695	528,8*	-								
<b>HM400</b>	582,0275	1081,4*	552,7*	-							
<b>HA100</b>	1308,943	354,5*	174,25*	726,9*	-						
<b>HA200</b>	736,8875	926,6*	397,8*	154,86*	572,1*	-					
<b>HA400</b>	439,9425	1223,5*	694,8*	142,09*	869*	296,95*	-				
<b>HDW100</b>	1726,333	62,89	591,6*	1144,3*	417,4*	989,4*	1286,4*	-			
<b>HDW200</b>	1630,25	33,2	495,6*	1048,2*	321,3*	893,4*	1190,3*	96,08	-		
<b>HDW400</b>	1470,778	192,67*	336,1*	888,8*	161,84*	733,9*	1030,8*	255,56*	159,47*	-	
<b>PC</b>	178,9175	1484,5*	955,8*	403,1*	1130*	558*	261,03*	1547,4*	1451,3*	1291,9*	-

\*Indicates a significant result.

HA100= *Hermannia depressa* acetone extract (100 µg/ml)

HM= *H. depressa* methanol extract

HDW= *H. depressa* aqueous extract

PC= Positive control